

LUSTRES

Precious Metal & Coloured Lustres



3710
LEMON GOLD
5g



3712
PLATINUM
5g



3713
COPPER
5g



3715
BRONZE
5g



3650
BLUE
5g



3651
RED
5g



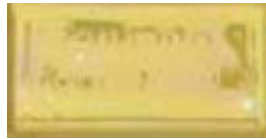
3652
BLACK
5g



3654
GREEN
5g



3655
AMBER
5g



3657
YELLOW
5g



3658
ORANGE
5g



3659
VIOLET
5g



3714
MOTHER OF PEARL (RIS)
5g & 25g

These precious metal and coloured lustres have dissolved metals as their essential component. They are mainly applied by brush on porcelain, glass or ceramic objects and are always applied to already fired and glazed objects. Before firing, the objects must be left to dry for a few hours in a warm, dust free place. Recommended firing temperatures are: Glass: 500°C-600°C, (Cone 022-021) Ceramics: 690°C-700°C, (Cone 018) Porcelain: 750°C-815°C, (Cone 017-015)

HOW TO APPLY AND USE

These products are ready-to-use and are generally of a gluey, dark brown liquid aspect. Use a smooth brush. The pieces to be decorated must be well cleaned and bone dry. Gold, platinum and some lustres like copper and bronze do not need to be diluted. The brush must neither be too heavily laden nor too little laden and the layer applied must be uniform and fine. Too thick a layer causes burning or clouding during the firing. The other lustres can be diluted with an appropriate thinner at more or less 10%. The Mother of Pearl Iris lustre needs to be diluted at 15% at least (it burns more easily than the others if applied in thick layers. Burnt Iris results in a white powder and does not adhere). Precision scales are recommended when diluting in order to maintain the same fluidity and shade of colour.

Please note that the information provided is for guidance only. Different application methods and different firing conditions will affect results.



CLAYMAN
where quality comes as standard

Before using these products on a large scale we advise
you to try a preliminary test.

Morells Barn • Park Lane • Lower Bognor Road • Lagness
Chichester • West Sussex • PO20 1LR
Telephone: 01243 265845 • Fax: 01243 267582