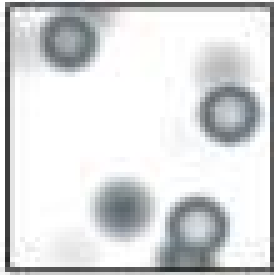
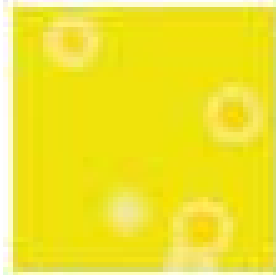


# CRYSTALITE MATT BRUSH-ON GLAZES

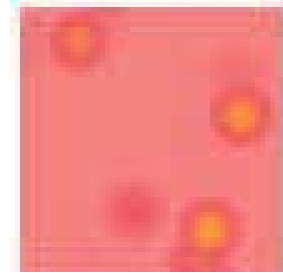
Introducing the new Chrysanthos Crystalite Brush-on Glazes. A range of unleaded intermixable brush-on glazes. Offering up to 18% more than similar products at unbeatable prices



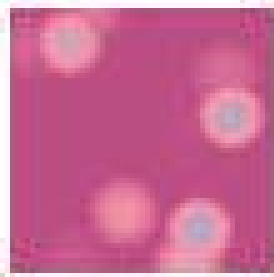
CR001 - WHITE  
140ml



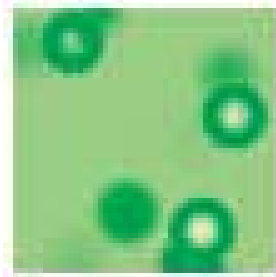
CR005 - BRIGHT YELLOW  
140ml



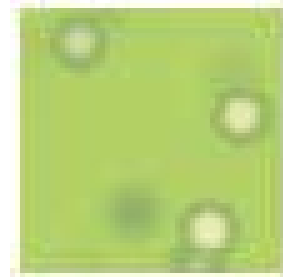
CR017 - CORAL RED  
140ml



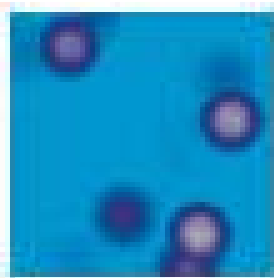
CR025 - BURGUNDY  
140ml



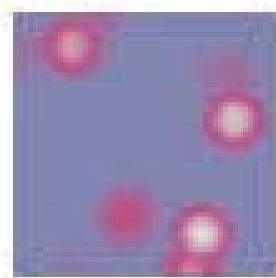
CR029 - JASPER  
140ml



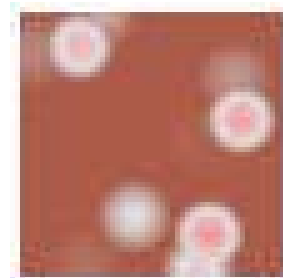
CR037 - APPLE  
140ml



CR049 - SUMMER BLUE  
140ml



CR057 - IRIS PURPLE  
140ml



CR065 - TERRACOTTA  
140ml

A new range of brush-on glazes with a firing range of 1000-1060°C (cone 06-04) offering superlative value. Available in 140ml jars. All glazes in the range are unleaded and fully intermixable.



Morells Barn • Park Lane • Lower Bognor Road • Lagness • Chichester • West Sussex • PO20 1LR  
Telephone: 01243 265845 • Fax: 01243 267582 • email: [info@claymansupplies.co.uk](mailto:info@claymansupplies.co.uk) • [www.claymansupplies.co.uk](http://www.claymansupplies.co.uk)

# CLAYMAN

where quality comes as standard

# CRYSTALLITE GLAZES

- Matt colours with fragments of embedded clear crystals
- Firing range is cone 06 (1000°C) to cone 04 (1060°C)
- 3 coat application to greenware or bisque
- All colors are fully intermixable
- Available in 140ml sizes

## USAGE

Crystallite Glazes are unleaded and come in a range of decorative matt finishes highlighted by a spattering of tiny glass flecks, giving a slightly textured surface finish.

## APPLICATION

Before use, mix glaze well, stirring or shaking to distribute crystals evenly.

To obtain optimum results, 3 coats of Crystallite Glazes should be applied using a well-loaded glaze brush. Ensure each coat is dry before applying subsequent coats at right angles to one another (i.e. crosshatching). Alternately 3 coats may be applied with a sponge.

Crystallite Glazes are typically not glazed over.

## PHYSICAL DATA

The Crystallite Glazes should be fired between cone 06 to 04 (1000°C to 1060°C). If the Crystallite Glazes are fired higher, the colour heightens and the crystals further expand.

## SAFETY DATA

These products are unsuitable for use on food or beverage containers since the finished product remains unglazed and consequently porous.

Also available in the Chrysanthos range of products is Superior Glazes, Hobby Brush-on and Dipping Glaze, 3D Trailing Colours and Cafe Underglaze Colours